



**Mark your calendars!
April 24TH-26TH**

**CONSTRUCTION
STORMWATER
MANAGEMENT COURSES**



HOSTED BY THE CITY OF DURANGO
ENGINEERING DIVISION

Who should attend?

- | | |
|-------------------------|---|
| Contractors | Municipal Planning & Development Staff |
| Excavators | Erosion Control Professionals |
| Developers | Real Estate Professionals |
| Home Builders | Anyone Interested in USEPA & Colorado Stormwater Phase II Regulations |
| Construction Inspectors | |
| Engineers | |
| Architects | |
| Landscapers | |
| Landscape Architects | |
| Consultants | |

APRIL 24TH

STORMWATER MANAGEMENT
& EROSION CONTROL (SMEC)

8AM – 5PM

Durango Recreation Center
2700 Main Avenue
Durango, CO 81301



If you are involved in activities that disturb more than one acre (1ac) of land, **City and State regulations apply to YOU!** These classes will help you understand the regulations and your responsibilities on a construction site.

COST: \$100 Per Person – Per Class
*3-year SWMP Admin certification available for an additional \$50

YOU MAY ATTEND ONE OR BOTH CLASSES



APRIL 25TH – 26TH

SWMP ADMINISTRATOR*

8AM – 5PM EACH DAY

Durango Recreation Center
2700 Main Avenue
Durango, CO 81301

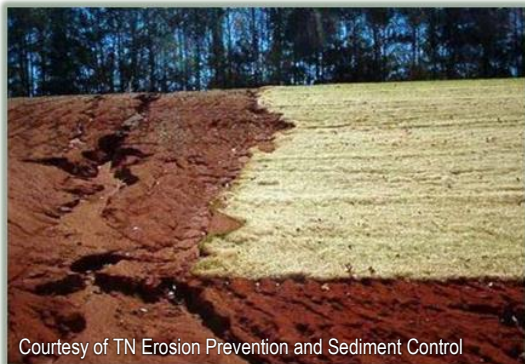
Stormwater Management Plans (SWMPs) are required to manage the Erosion and Sediment Controls and ensure proper function and maintenance of the controls.

APRIL 24th

Stormwater Management & Erosion Control (SMEC)

This course is an introductory course for stormwater management and erosion control, based on the General Construction Permits under the Colorado Discharge Permitting System (CDPS) program. This program has been developed for anyone responsible for the proper installation, maintenance, and inspection of Best Management Practices (BMPs) for the control of stormwater run-off, pollutants, erosion and sedimentation at construction sites. The program covers:

- The Stormwater Program legal requirements, including permitting and SWMPs.
- Erosion & sedimentation at construction sites.
- Types of BMPs for specific conditions to control erosion & sedimentation.
- BMPs for managing other sources of pollution; petroleum products, wastes, staging & equipment.
- Installing construction site BMPs.
- Inspecting and maintaining construction site BMPs.
- Counts as a prerequisite for SWMP Admin course.



Courtesy of TN Erosion Prevention and Sediment Control

APRIL 25th – 26th

SWMP Administrator (SWMP Admin)

This two-day intermediate training program will prepare a Stormwater Management Plan (SWMP) Administrator to competently handle all aspects of the SWMP in daily site operations. The program covers:

- The responsibilities of a SWMP Administrator
- Requirements of the *Stormwater Discharges Associated with Construction Activity* General Permit
- Importance of Preconstruction Site Assessments
- Selection process for adequate control measures
- Evaluation of SWMPs & modification of documents
- Conducting productive site inspections
- Proper documentation practices
- Assessing Corrective Actions

Prior training required.

A 3-year SWMP Administrator Certification is available from Red Rocks Community College upon successful completion of a certification test and an additional \$50 fee.

Course includes a field trip to an active construction site. Participants are required to bring their own personal protective equipment.

TRAININGS ARE PRESENTED BY:
ALTITUDE TRAINING ASSOCIATES



REGISTER EARLY SPACE IS LIMITED!

If registering by phone or e-mail, please mail your checks before April 15th, 2018 to the address below, or you may pay at the door. Make checks payable to: CITY OF DURANGO. Cancellations must be received 48 hrs. before the training in order to receive a refund.

Options For Registration:

1. Call or e-mail the Engineering Division at: (970) 375-4810
jaclyn.cox@durangogov.org
OR
2. Fill out this panel and mail with a check to:
City of Durango
Community Development Department
Engineering Division
949 East 2nd Avenue
Durango, CO 81301

Name: _____
Company: _____
Phone: _____
Email: _____
SMEC SWMP Admin

Name: _____
Company: _____
Phone: _____
Email: _____
SMEC SWMP Admin

Additional forms are available on the City Website at:
www.durangogov.org/stormwater